



## Wivenhoe Power Station Data Logger

### High speed data logging and data storage

Wivenhoe Power Station has two of Australia's largest Kingfisher RTU installations. Part of the system incorporates high-resolution time and date stamped sequence of events recording. This is achieved using hardware that attaches the time and date of occurrence of a digital input change down to 1-millisecond (+/-) resolution.

The logged data is then retrieved from the RTU processor using the Wonderware I/O Server. Logged data and other real time data are ultimately presented back to the HMI for animation and alarms. Data storage is achieved using the Wonderware Industrial SQL Server. High-resolution time and date information is retained using the InSQL Server product.

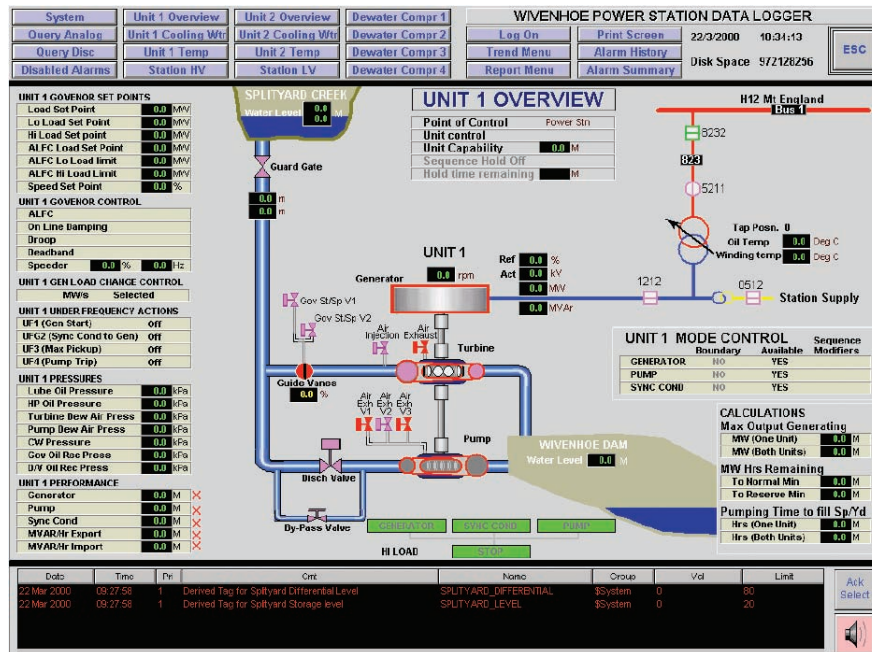


Figure 1. – Wivenhoe Power Station Unit 1 Overview Mimic

SOE (Sequence of Events) data is used to determine the order of equipment alarm and status information. Ultimately this is used to enhance fault diagnosis and thus minimize plant down time.

**U.S.A.**  
CSE Semaphore Inc.  
1200 Chantry Place  
Lake Mary, FL 32746  
U.S.A.  
P +1 (407) 333 3235  
F +1 (407) 386 6284

**Australia**  
CSE-Semaphore  
Unit 8, 3-5 Gilda Crt  
Mulgrave, Victoria 3170  
Australia  
P +61 (03) 8544 8544  
F +61 (03) 8544 8555

**Europe**  
CSE-Semaphore Belgium  
Waterloo Office Park — Building "M"  
Dreuve Richelle, 161  
B-1410 Waterloo  
Belgium  
P +32 (2) 387 42 59  
F +32 (2) 387 42 75

© 2008 CSE-Semaphore. All rights reserved. T-BOX, T-VIEW, and Dream Report are trademarks of CSE-Semaphore. All other marks may be trademarks of their respective owners. 0861012 02/08